

Movement ETA Cal. 2001, 2671, 2824-2, 2892A2

Burton

AVIATOR

STURMANSKIE

Product Manual
International Warranty

Product Manual

Movement ETA Cal. 2001, 2671, 2824-2, 2892A2

You are now the owner of a Poljot Automatic Mechanical Watch with a Date calendar with one of movements of the Swiss firm ETA Cal. 2001, or Cal. 2671, or Cal. 2824-2, or Cal. 2892A2.

For best results, please read the instructions in this booklet carefully before using your Poljot Mechanical Watch.

Please keep this manual handy for ready reference.

CONTENTS

FEATURES	4
DISPLAY AND CROWN OPERATIONS	5
HOW TO OPERATE THE SCREW IN LOCK TYPE CROWN	7
WATCH WINDING	8
TIME/CALENDAR SETTING	10
HOW TO USE THE "SOUNDLESS" TIMER FUNCTION	13
HOW TO USE THE WORLD TIME FUNCTION	16
TIME DIFFERENCES TABLE	19
SPECIFICATIONS	22
TO PRESERVE THE QUALITY OF YOUR WATCH	25
GUARANTEE	30

FEATURES

TIME/CALENDAR

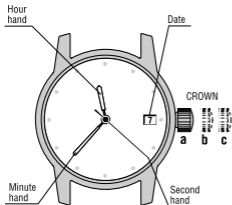
- TIME – Hour, minute and central second hands.
- DATE in the dial window.
- Stop second device (optional for Cal. 2671 and Cal. 2824-2)

Additional functions Cal. 2824-2 and Cal. 2892A2:

- Countdown over the range 1 hour or 12 hours (for models with a “soundless” timer);
- World Time (for models with World time scale).

DISPLAY AND CROWNS OPERATIONS

Cal. 2001 and 2671



Notes: Crown of the watch has 3 positions:

- a – normal running position and manual winding;
- b – fast date correction;
- c – time setting and second hand locking.

ATTENTION!

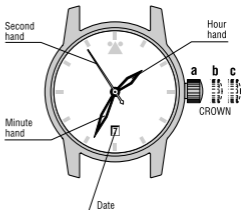
Manual winding not provided for Cal. 2671 and Cal. 2824-2

DISPLAY AND CROWNS OPERATIONS

Cal. 2824-2 and 2892

Crown of the watch has 3 positions:

- a – normal running position and manual winding;
- b – fast date correction;
- c – time setting and second hand locking.

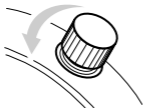


HOW TO OPERATE THE SCREW IN LOCK TYPE CROWN

(for models with screw in lock type crown)

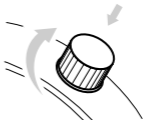
To unscrew the crown:

1. Turn it counterclockwise until tight.
2. Then you can wind the mainspring manually (except Cal. 2671 and Cal. 2824-2) or pull crown out in Pos. "b" or Pos. "c"



To screw in the crown:

1. Return the crown in Pos. "a".
2. Turn crown clockwise while pressing it lightly until tight.



WATCH WINDING

Cal. 2001 and Cal. 2892A2

- Turn crown clockwise in Pos. “**a**” for 3...5 turnings. The second hand begins its motion;
- Setting of time/calendar;
- Put the watch on your wrist. If you wear your watch more than 10 hours per a day with a normal motion activity, no necessity will occur to wind it manually (even if you leave it lying motionless all the day).

Notes:

1. It is possible to wind the watch manually completely. For that turn crown clockwise for 12...15 turnings. (It is impossible to feel full winding in the automatic watch, but there is no way to break the mainspring as well.)
2. Do not wind your watch with all your might otherwise automatic device can be used up untimely.



Cal. 2671 and Cal. 2824-2

- To start your watch, swing it from side to side in a horizontal position for about 30 second (50...100 swingings);
- Setting of time/calendar;
- Put the watch on your wrist. If you wear your watch more then 10 hours per a day with a normal motion activity, no necessity will occur to wind it manually (even if you leave it lying motionless all the day).

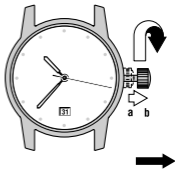
TIME/CALENDAR SETTING

1. Pull out the crown in Pos. “b”, turn it clockwise until the previous day’s date appears.

2. Pull out the crown in Pos. “c”, when the second hand aligns with 12 hours marker. The second hand stops (For Cal. 2671 and Cal. 2824-2 it happens, if the stop second device is provided for this model).

3. Turning the crown clockwise, turn hands until the desired date appears.

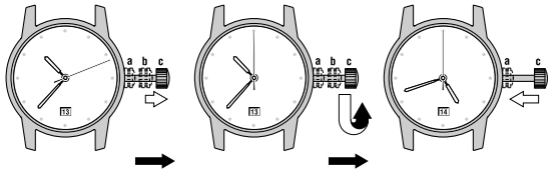
Continuing turning the crown set hands to the desired time.



TIME/CALENDAR SETTING

CAUTION!

Do not correct or set calendar in the period since 8 : 00 P.M. till 1 : 00 AM, it can result in a breakage of your watch.



TIME/CALENDAR SETTING

4. Return the crown in Pos. “a”. If you want to set exact time, fulfill this procedure with time signal.

ATTENTION!

- It is necessary to correct the date manually by the fast method or by setting hands at the end of February and all short (30 days) months.

Note:

- When setting the hour hand, check that AM/PM is correctly set. The watch is so designed that the date changes once in 24 hours. Turn the hands past the 12 o'clock marker to determine whether the watch is set for the A.M. or P.M. period. If the date change, the time is set for the A.M. period. If the date do not change, the time is set for the P.M. period.

HOW TO USE THE “SOUNDLESS” TIMER FUNCTION

(for models with the rotating timer scale)

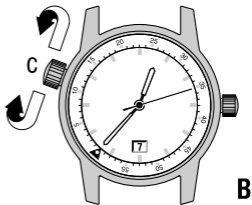
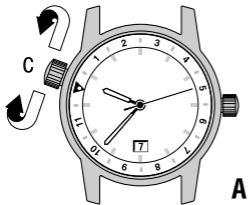
1. You can measure time intervals up to 12 hours in 15 minutes discreet by the “soundless” timer “**A**” and time intervals up to 60 minutes in 1 minute discreet by the “soundless” timer “**B**”.

2. Turn the rotating scale by the crown “**C**” clockwise or counterclock-

wise to align its “▼” mark with the hour hand for the timer “**A**” or minute hand for the timer “**B**”.

3. When the hour hand (minute hand for the timer “**B**”) points to the number of the desired interval fulfill the necessary operation.

HOW TO USE THE “SOUNDLESS” TIMER FUNCTION



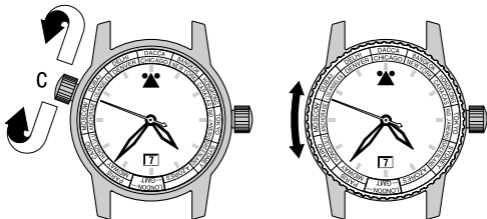
HOW TO USE THE “SOUNDLESS” TIMER FUNCTION

Ex. :

- Now it is 10 : 37 A.M., you must leave the conference in 1h 45min to be at the airport in time. Align “▼” mark with the hour hand and leave the conference when the hour hand point to 1 : 45 at the timer scale.
- You were given 15 minutes for your speech. Beginning it at 4 : 37 P. M. you align “▼” mark with the minute hand and you must finish your speech when the minute hand points to “15” at the timer scale.

HOW TO USE THE WORLD TIME FUNCTION

(for models with World time scale)



HOW TO USE THE WORLD TIME FUNCTION

The revolving World time scale on the dial or on the rotating bezel enables you to find the time of 24 cities in different time zones throughout the world.

1. Turning the crown “C” or bezel clockwise or counterclockwise set the

name of the city with the local time in front of the hour hand arrow.

2. Current hour in the desired city will be indicated opposite its name or the name of the city, which is at the same time zone.

Note: Cities of the 12 time zones easterly GMT are at the external scale. Cities of the 12 time zones westerly GMT are at the internal scale. The time of day of cities at the external scale is in opposition the time of day of cities at the internal scale.

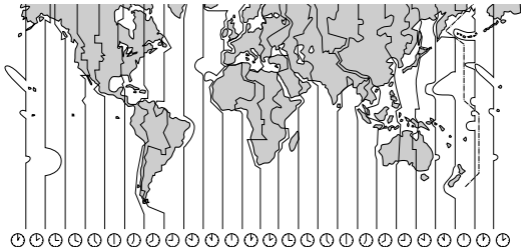
HOW TO USE THE WORLD TIME FUNCTION

Ex:

1. You are in Moscow. The local time of Moscow is 4 : 37 P. M. Set the name of the city – Moscow in front of the hour hand arrow. Current hour in the disired city is read opposite its name or the name of the city, which is at the same time zone.

- PARIS is at the same scale as MOSCOW – PARIS time is 2 : 37 P. M.;
- TOKYO is at the same scale as MOSCOW – TOKYO time is 10 : 37 P. M.;
- NEW YORK is at the internal scale – NEW YORK time is 8 : 37 A. M.;
- HONOLULU is at the internal scale – HONOLULU time is 3 : 37 A. M.

TIME DIFFERENCES



TIME DIFFERENCES

(GMT) = Greenwich Mean Time

GMT

K	Name of the main cities
hours	of the time zone
0	London*, Casablanca, Dakar
+1	Paris*, Rome*, Amsterdam*, Frankfurt*, Berlin*
+2	Cairo*, Athens*, Istanbul*, Kiev*, Cape Town, Tripoli
+3	Moscow*, Mecca, Nairobi
+4	Volgograd*, Dubai

+5	Ekaterinburg*, Tashkent*, Karachi
+6	Novosibirsk*, Dacca
+7	Irkutsk*, Bangkok, Phnom Penh, Jakarta
+8	Hong Kong, Manila, Beijing*, Singapore
+9	Iakutsk*, Tokyo, Seoul
+10	Khabarovsk*, Sydney*, Guam

TIME DIFFERENCES

+11	Magadan*, New Caledonia, Solomon Islands	-7	Denver*, Edmonton*
+12	Petropavlovsk Kamchatskiy*, Wellington, Fiji Islands	-6	Chicago*, Mexico City
-11	Midway Islands	-5	New York*, Washington, Montreal*
-10	Honolulu	-4	Caracas, Santiago*
-9	Anchorage*	-3	Rio de Janeiro*, Buenos Aires*
-8	Los Angeles*, San Francisco*, Vancouver*	-2	
		-1	Azores Islands*

The asterisk (“*”) indicates a city which uses daylight saving time (summer time).

SPECIFICATIONS

1. Winding
 - Cal. 2671 and Cal. 2824-2automatic winding with ball bearing device
 - Cal. 2001 and Cal. 2892A2manual and automatic device winding with ball bearing
2. Frequency28,800 (4.0 Hz)
3. Daily rate-10 to + 20 s/day
4. Power reserve minimum (full winding)
 - Cal. 2001 and Cal. 267140 h
 - Cal. 2824-2 and Cal. 2892A242 h

- 5. Power reserve after wearing the watch continuously
for 10...12 hours (minimum)24 h

- 6. Display system
 - Time*3 hands (hour, minute and central second)
 - Calendar*Date in window

- 7. Calendar typeinstantaneous Date

- 8. Calendar correctionfast date correction

- 9. Shock resistance device

SPECIFICATIONS

10. Stop second device

- Cal. 2001 and Cal. 2892A2always
- Cal.2671and 2824-2optional

11. Jewels number

- Cal. 200120
- Cal. 2671and Cal. 2824-225
- Cal. 2892A221

TO PRESERVE THE QUALITY OF YOUR WATCH

WATER RESISTANCE

Non- water resistance

If “WATER RESISTANT” is not inscribed on the case back, your watch is not water resistant, and care should be taken not to get wet as water may damage the movement. If the watch become wet, we suggest that you have it checked by the AUTHORIZED POLJOT DEALER or SERVICE CENTER.

Water resistance (3 bar)

If “WATER RESISTANT” is inscribed on the case back, your watch is designed and manufactured to withstand up to 3 bar, such as accidental contact with splashes of water or rain, but it is not designed for swimming or diving.

- **Water resistance (5 bar)**

If “WATER RESISTANT 5 bar” is inscribed on the case back, your watch is designed and manufactured

TO PRESERVE THE QUALITY OF YOUR WATCH

to withstand up to 5 bar and is suitable for swimming, yachting and taking a shower.

- **Water resistance (10 bar/15 bar)**
If “WATER RESISTANT 10 bar” or “WATER RESISTANT 15 bar” is inscribed on the case back, your watch is designed and manufactured to withstand up to 10/15 bar and is suitable for taking the bath and shallow water diving, but not for deep water diving. We recommend that you

wear a special Diver’s watch for deep water diving.

Before using the water resistance 5, 10, or 15 bar watch in water, be sure the crown is pushed in completely.

Do not operate the crowns when the watch is wet or in water.

If used in sea water, rinse the watch in fresh water and dry it completely.

TO PRESERVE THE QUALITY OF YOUR WATCH

When taking the shower with the water resistance 5 bar watch, or taking the bath the water resistance 10 or 15 bar watch, be sure to observe the following:

- Do not operate the crowns when the watch is wet with soapy water or shampoo.

- If the watch is left in warm water, a slight time loss or gain may be caused. This condition, however, will be corrected when the watch returns to normal temperature.

Note:

Pressure in bar is a test pressure and should not be considered as corresponding to actual diving depth since swimming movement tends to increase the pressure at a given depth. Care should also be taken on diving into water.

TO PRESERVE THE QUALITY OF YOUR WATCH

MAGNETISM

Your watch will be adversely affected by strong magnetism. Keep away from close contact with magnetic objects.

SHOCK & VIBRATION

Light activities will not affect your watch, but be careful not to drop your watch or hit it against hard surface, as this may cause damage.

CHAMICALS

Be careful not to expose the watch to solvents (e.g., alcohol and gasoline), mercury (i.e. from the broken thermometer), cosmetic spray, detergents, adhesives or paints. Otherwise, the case, bracelet etc. may become discolored, deteriorated or damaged.

TO PRESERVE THE QUALITY OF YOUR WATCH

CARE OF CASE AND BRACELET

To prevent possible rusting of the case and bracelet caused by dust, moisture and perspiration, wipe them periodically with the soft dry cloth.

PRECAUTION REGARDING CASE BACK PROTECTIVE FILM

If your watch has a protective and/or a sticker on the case back, be sure to peel them off before using your watch. Otherwise, perspiration getting in under them may rust the case back.

PERIODIC CHECK

It is recommended that the watch be checked once every 2 to 3 years. Have your watch checked by an AUTHORIZED POLJOT DEALER or SERVICE CENTER to ensure that the case, crowns, buttons, gaskets and crystal sealing remain intact.

GUARANTEE

Guarantee period is 1 year from the date of purchase.

Guarantee period can be increased for concrete model. The mark of real Guarantee period is done in Guarantee Card.

Within Guarantee period regulation, adjustment, repair or replacement of

parts or movement will be performed without charge except the case of damage caused by accidents or lack of care.

IMPORTANT

- 1.** This GUARANTEE does not cover the glass crystal, bracelet, strap and attachment.
- 2.** This GUARANTEE does not cover scratches on the case caused by using.
- 3.** This GUARANTEE is valid only if properly filled in and dated by the authorized and appointed POLJOT dealer from whom watch was purchased.
- 4.** We bear no responsibility under this GUARANTEE for repairs if the watch is tampered with or damaged by other than POLJOT AUTHORIZED SERVICE facilities.
- 5.** Altered or tampered GUARANTEE CARD or photocopies of the GUARANTEE CARD are not valid and not acceptable.
- 6.** We bear no responsibility for any trouble with or damage to watches due to natural disaster, such as fire, flood or earthquake.



109147, Russia, Moscow,
Marksistskaya str, bld. 34/8.
Tel.: (095) 911-3210.
Fax: (095) 911-6874.
E-mail: Volmax@sovintel.ru
www.aviatorwatch.ru